



**\$2,047,192**  
**DOLLARS**

The number of volunteer hours we converted into dollars is \$2,047,192

**371**  
**EMPLOYEES**

CDS was funded for 371 employees

**2** **MILLION**  
**MEALS**

We served two million meals and snacks to children

**\$26,551,563** **MILLION**  
**FEDERAL DOLLARS**

CDS brought \$26,551,563 federal dollars to communities we serve

**175**  
**HEAD START CHILDREN**

Connected 175 Head Start children to mental health services

**221** **HS**  
**STUDENTS**

Partnered with six high schools providing 221 high school students with state mandated child care training. They graduated high school with the needed training to go directly into the work force.



**\$5,119**  
**DONATED ITEMS**  
Our shelter received donated items (clothes, bedding, furniture, etc.) amounting to \$ 5,119 between October 1, 2010 to present.



**1,713** **EXAMS**  
1,713 Child Care Training Competency exams given to child care educators with 80% passing

**23** **PEOPLE**  
**WITH DISABILITIES**

We provided on the job training to 23 people with disabilities



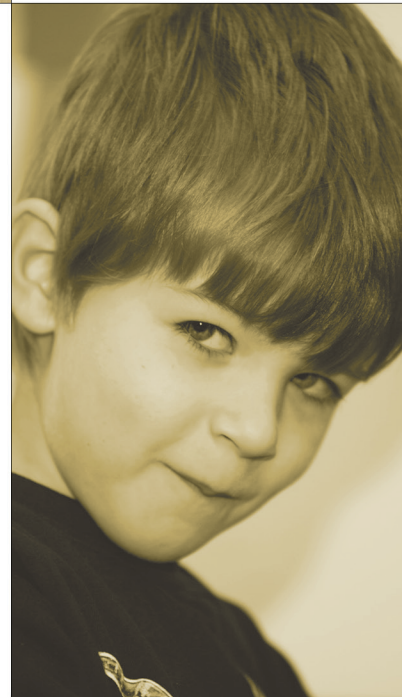
**CHILDHOOD DEVELOPMENT SERVICES**

1601 NE 25th Ave. Suite 900  
Ocala, Florida 34470-8823  
Phone: 352.629.0055  
Fax: 352.629.7766  
[www.discovercds.org](http://www.discovercds.org)



**25**  
**COUNTIES**

We provided continuing education units (CEU) in 25 counties



**157**  
**STUDENTS**

157 students completed the Florida Child Care Professional Credential successfully. Training consists of 120 hours of instruction and 480 contact hours working with children birth – school age.





# 2010 CDS ANNUAL REPORT

## AWARDS

- Florida Head Start Association **Image Award**
- Florida Head Start Association **Outstanding Service and Commitment Award**
- The Division of Vocational Rehabilitation, the Agency for Persons with Disabilities, the Division of Blind Services, and the Agency for Workforce Innovation **Outstanding Employer of the Year Award**
- Abilities of Florida **Community Partner of the Year Award**



CDS experienced significant changes over the past year. Two key changes include the expansion of our Early Head Start Program and our USDA Food Programs. CDS oversees three USDA Food Programs in 28 counties throughout Florida. During 2010, we experienced a two-fold increase in the number of childcare centers that signed-up with CDS' USDA Food Program. Last year we realized further growth when CDS procured a grant to assist 144 additional Early Head Start families in Marion and Alachua counties. To serve these families, we created 60 new jobs for teachers, counselors and other professional personnel at CDS. This expansion also required that we build two new facilities, which allowed us to employ services from two local building contractors. During such tough economic times, we are very pleased to create jobs for residents of the communities we serve.

Last year was our final year providing Early Learning services in Florida. CDS has provided Early Learning (or its predecessor Subsidized Child Care) since 1969. Following a statewide trend, Early Learning Coalitions in our service area took services in-house, which has both positive and negative consequences for CDS. Though Early Learning was one of CDS' smaller programs in 2010 (accounting for 6% of our annual operating budget), it was an important program that kept us updated with client needs and community resources. We derive positive outcomes from ceasing Early Learning services, due to our ability to create our own identity by promoting events and services under our own corporate name. One of our goals is to eliminate confusion about our identity – we are not a government agency, and we are not a Coalition. We are a private 501(c)3, nonprofit corporation with distinctive products and services, developed by CDS for one primary purpose... to help our clients become self-sufficient.

Our new Vocational Rehabilitation On-The-Job-Training program was a resounding success for its clients. Partnering agencies refer individuals to us who have difficulty finding employment, due to physical challenges, or because of a lack of technical skills. We assess the person's needs, develop a training plan and match our clients with experienced CDS trainers to develop necessary skills to gain future employment. In our first year, CDS received two statewide awards for our program's successes.

CDS has been in operation for 46 years, and we look forward to enhancing the opportunities and the quality of life for residents of the 41 counties we serve throughout Florida.

**CURT BROMUND, CEO**

**CHUCK HIATT, BOARD PRESIDENT**

## STATEMENT OF FINANCIAL POSITION

JUNE 30, 2010

		<u>ASSETS</u>
<b>Current Assets</b>		
Cash and cash equivalents	\$	700,562
Investments		775,204
Grants receivable		2,667,718
Accounts receivable, other		124,024
Inventory		38,146
Prepaid expenses		<u>59,371</u>
<b>Total Current Assets</b>		<u>4,365,025</u>
<b>Property and Equipment, net of accumulated depreciation</b>		<u>2,459,486</u>
<b>Property and Equipment temporarily restricted for Federal and State programs (Note 3)</b>		<u>2,863,525</u>
<b>Other Assets</b>		
Deposits	11,118	
Loans costs, net of accumulated amortization		<u>14,693</u>
<b>Total Other Assets</b>		<u>25,811</u>
<b>Total Assets</b>	\$	<u>9,713,847</u>
		<u>2010</u> <u>2009</u>
<b>LIABILITIES AND NET ASSETS</b>		
<b>Current Liabilities</b>		
Accounts payable	\$	1,680,873
Accrued payroll and related expenses		455,195
Accrued leave		340,104
Deferred revenue		84,902
Current portion of long-term debt		<u>88,233</u>
<b>Total Current Liabilities</b>		<u>2,649,307</u>
<b>Long-Term Liabilities</b>		
Long-term debt, net of current position		<u>559,861</u>
<b>Total Long-Term Liabilities</b>		<u>559,861</u>
<b>Total Liabilities</b>		<u>3,209,168</u>
<b>Net Assets</b>		
Unrestricted		
Net investment in property and equipment	1,811,392	
Undesignated net assets	1,768,882	
Temporarily restricted, operating	60,880	
Temporarily restricted, property and equipment (Note 3)		<u>2,863,525</u>
<b>Total Net Assets</b>		6,504,679
<b>Total Liabilities and Net Assets</b>	\$	<u>9,713,847</u>



## BOARD OF DIRECTORS

**CHIEF EXECUTIVE OFFICER**  
Curt Bromund

**PRESIDENT**  
Charles Hiatt

**VICE CHAIR**  
Jeannie Shipp

**TREASURER**  
Norbert, J. (Joe) Fante, Jr.

**SECRETARY**  
Rusty Branson

**MEMBERS**  
Susan Dean

Ted Strawbridge

R. James McCune, Jr.

Miguel A. Ramos

Ivan F. Young

Adam Lombardo

Jeremy T. Powers

Linda Daymon

Addam Miller